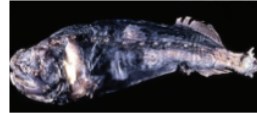


Deep Sea Fish Specimen Key

Cetomimidae - Whalefishes

Features

- Whale shaped bodies
- No pelvic fins
- Wide horizontal gaping mouth
- No body scales but do have lateral line scales
- Small degenerated eyes
- Deep lateral lines



Species (20 species identified)

Cetomimus sp
Cetostoma regain
Danacetichthys galathenus
Ditropichthys storeri
Gyrinomimus sp.
Procetichthys krefftii
Rhamphocetichthys savage

Megalomycteridae - Bignose Fishes

Features

- Long, tube-shaped body
- No pelvic fins
- Small horizontal mouth with immobile upper jaw
- Non-overlapping mosaic scales
- Degenerated eyes
- No lateral lines



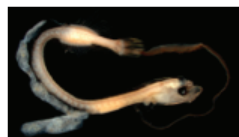
Species (4 genera identified)

Ataxolepis apus
Vitaziella
Cetomimiodes parri
Megalomycter (teevani)

Mirapinnidae - Tapetails

Features

- Long tail streamer (some get torn off)
- Large horizontal pelvic fins
- Large, upturned mouth
- No scales
- Large eyes
- No lateral lines



Species (5 species identified)

Eutaeniphorus festivus
Mirapinna
Parataeniphorus brevis
Parataeniphorus gulosus
Parataeniphorus bertelseni