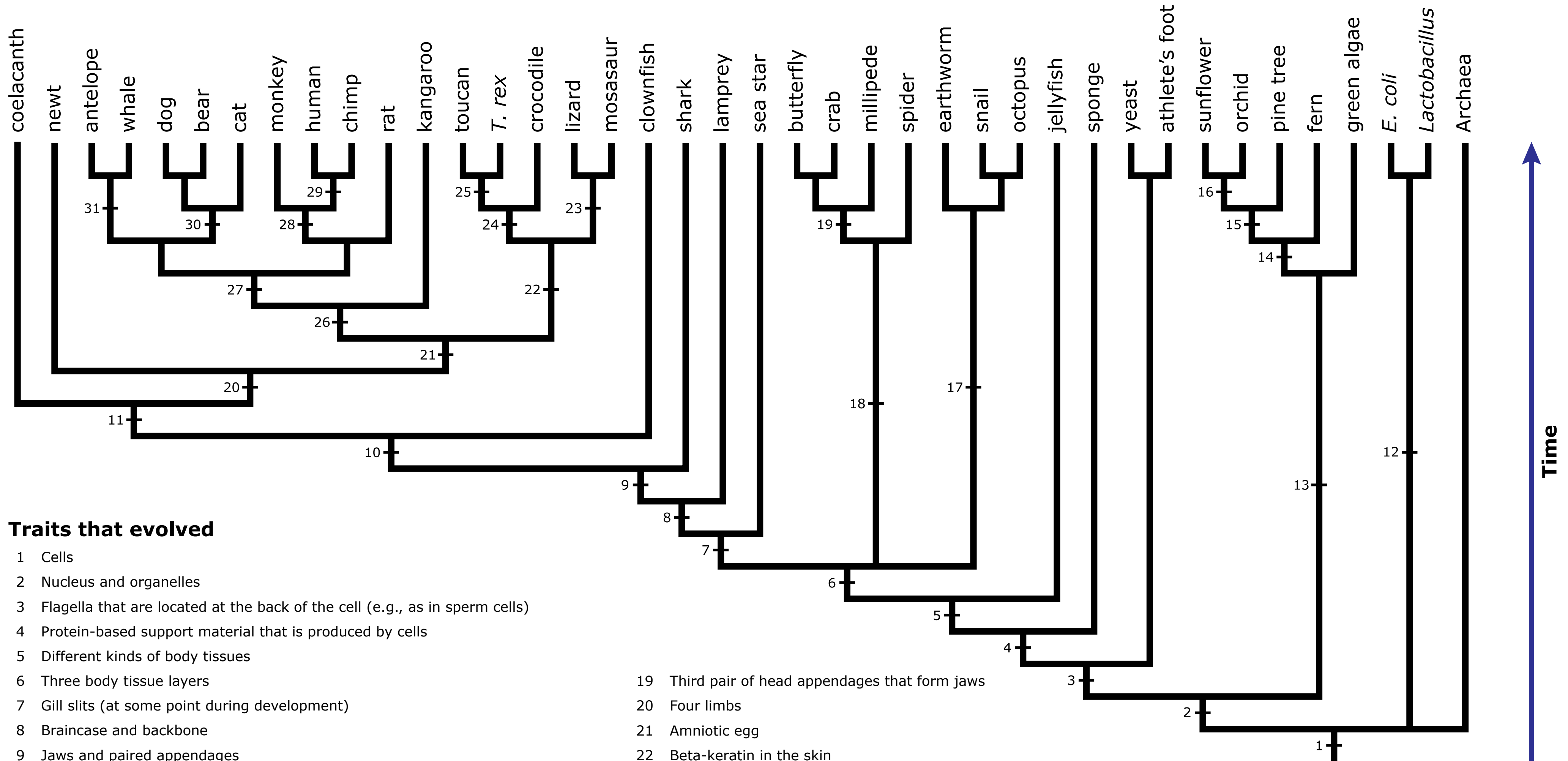




The Tree of Life



Traits that evolved

- | | |
|-------------------------------------------------------------------------------------|----------------------------------------------------------------------------------|
| 1 Cells | 19 Third pair of head appendages that form jaws |
| 2 Nucleus and organelles | 20 Four limbs |
| 3 Flagella that are located at the back of the cell (e.g., as in sperm cells) | 21 Amniotic egg |
| 4 Protein-based support material that is produced by cells | 22 Beta-keratin in the skin |
| 5 Different kinds of body tissues | 23 Flexible bones at back of skull (cranial kinesis) |
| 6 Three body tissue layers | 24 Bump on the rear of the ankle bone (calcaneus) |
| 7 Gill slits (at some point during development) | 25 Wishbone or furcula (fused clavicle bones) |
| 8 Braincase and backbone | 26 Single lower jaw bone |
| 9 Jaws and paired appendages | 27 Long-lasting placenta |
| 10 Bony skeleton | 28 Fingernails instead of claws |
| 11 Appendage composed of a single bone (humerus) that articulates with the shoulder | 29 Broad, shallow thorax |
| 12 Hollow flagella on cells | 30 Specialized slicing teeth (large upper fourth premolar and lower first molar) |
| 13 Cell wall made of cellulose | 31 Double pulley ankle bone (astragalus) |
| 14 Pores for gas exchange (stomata) | |
| 15 Seeds | |
| 16 Flowers | |
| 17 Spiral cell arrangement during development | |
| 18 Segmented body | |