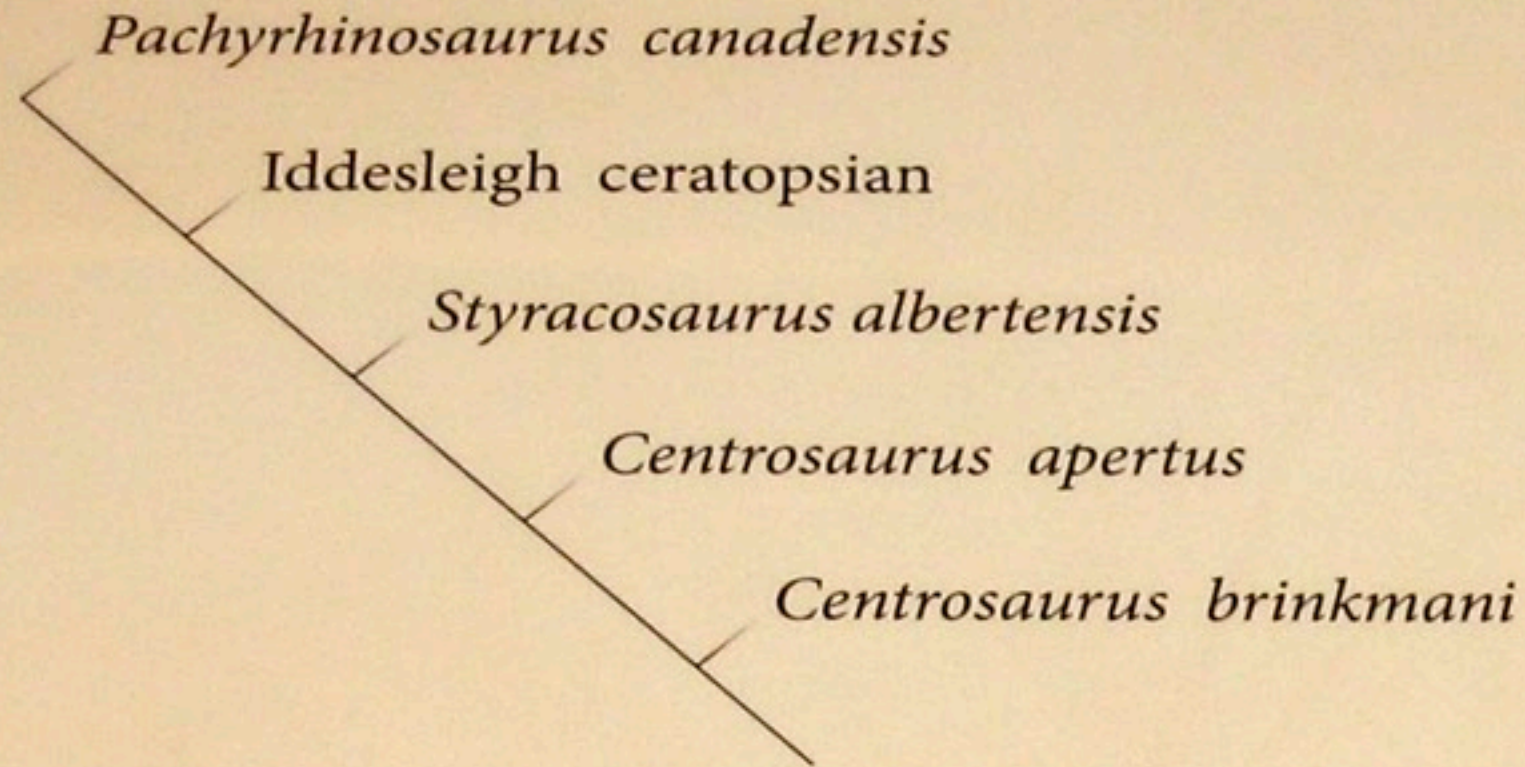


Centrosaurine

(longer nasal horns, short frill, ornamented frill)

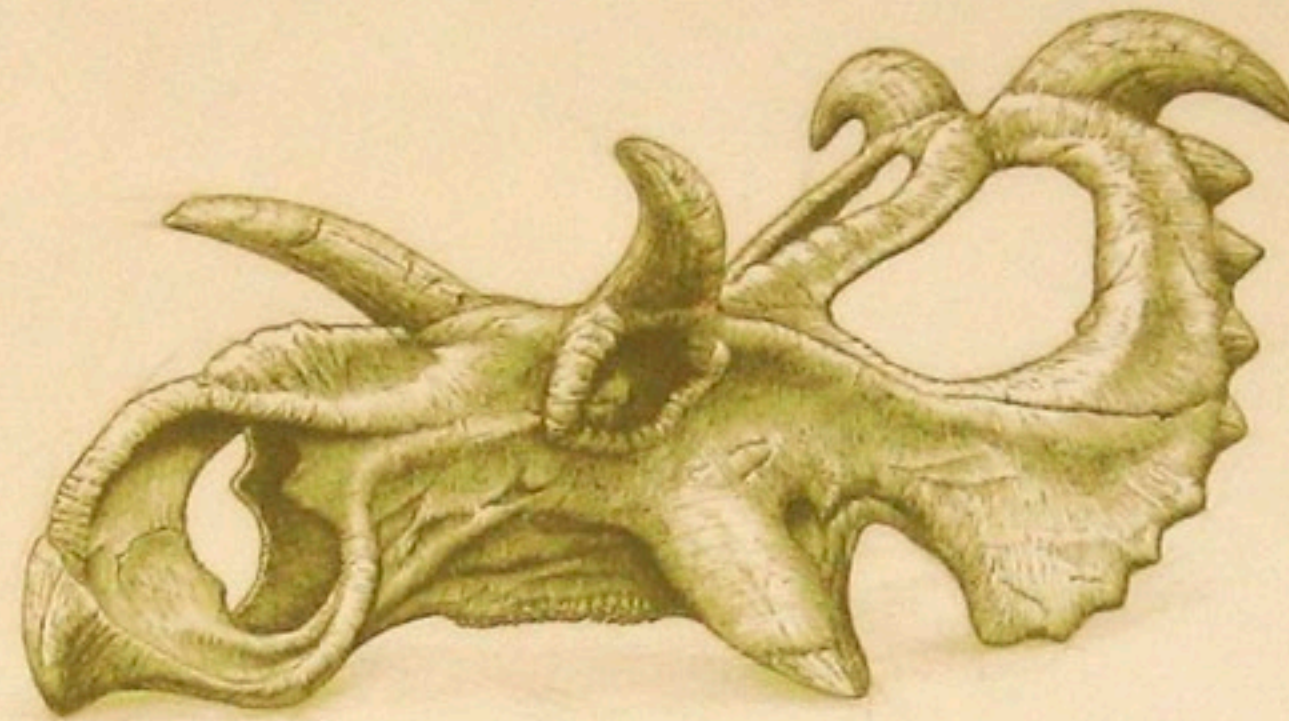
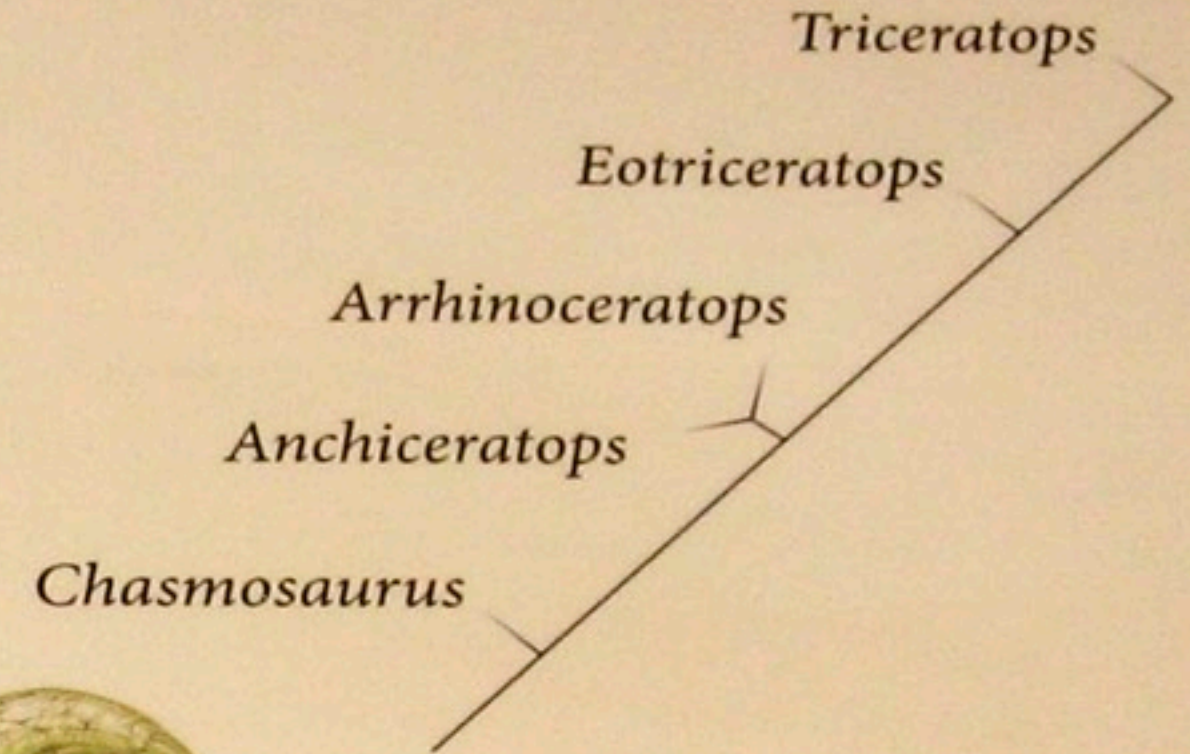
from Alberta:



Chasmosaurine

(longer orbital horns, long frill, simple frill)

from Alberta:



Albertaceratops nesmoi

This new ceratopsian has long orbital horns (a chasmosaurine feature), but a frill like that of a centrosaurine. The combination of features suggests this newfound ceratopsian existed near the evolutionary division between chasmosaurines and centrosaurines.